

A night sky photograph showing the Milky Way galaxy and a comet with a long tail, set against a dark landscape. The Milky Way is visible as a dense band of stars and dust, stretching across the sky. The comet is positioned in the lower right quadrant, with its bright nucleus and a long, diffuse tail. The foreground shows dark, silhouetted mountains or hills.

**Optical properties of Dust Particles
in the Solar System,
with emphasis on cometary dust**

C/2006 P1 McNaught (M. Druckmuller, Argentina)

Optical properties of Dust Particles in the Solar System, with emphasis on cometary dust

A.Chantal Levasseur-Regourd

UPMC Univ Paris 6 / IPSL-CNRS, France

Outline

1. Introduction
2. Key facts about cometary dust
3. Polarization of solar light scattered by dust
4. Cometary dust polarimetric observations
5. Interpretation through numerical simulations
6. Interpretation through laboratory simulations
7. Optical properties, interplanetary & asteroidal dust
8. Perspectives and conclusions

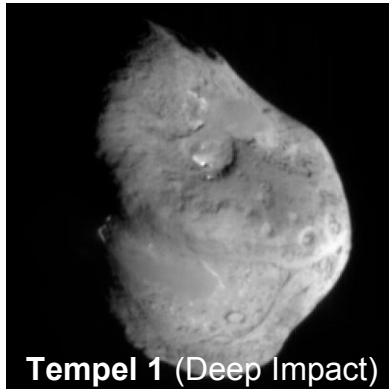


Optical properties of Dust Particles in the Solar System, with emphasis on cometary dust

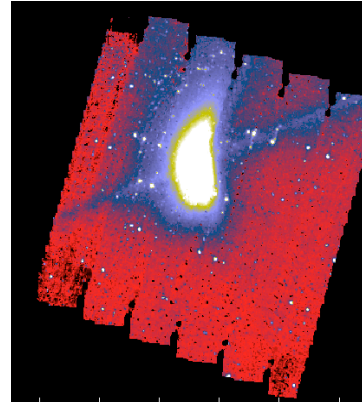
1. Introduction

C/2006 P1 McNaught (M. Druckmuller, Argentina)

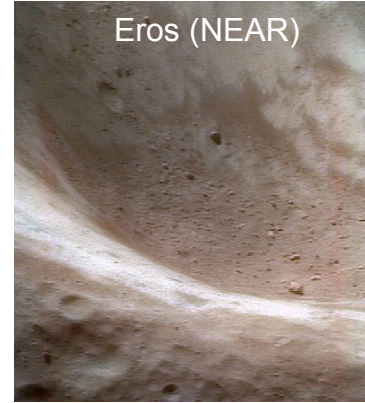
1. Introduction: Dust in small bodies



Cometary nuclei

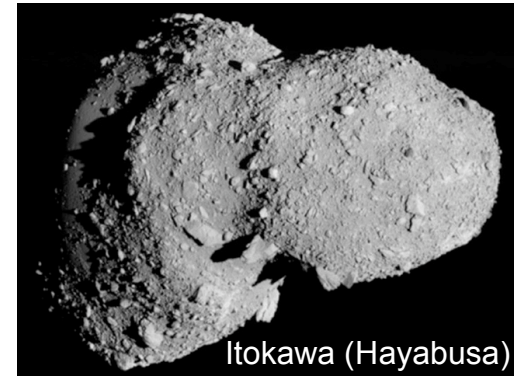


Dust trails (W. Reach)



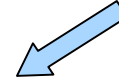
Eros (NEAR)

Regolith



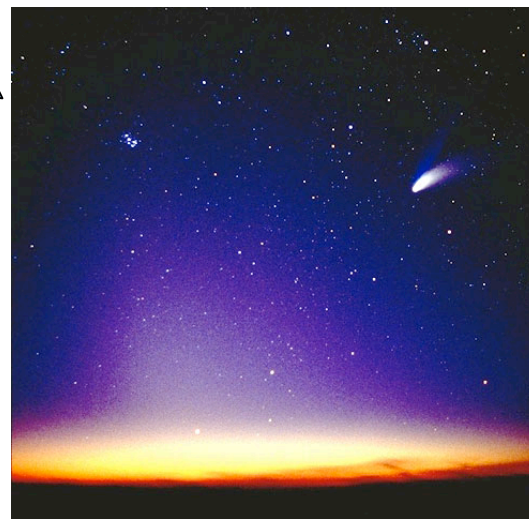
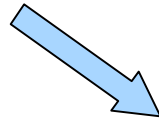
Itokawa (Hayabusa)

Asteroids

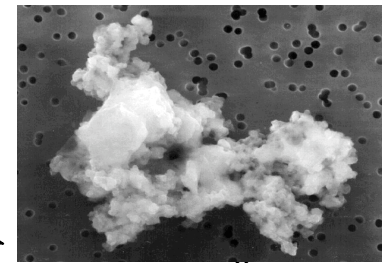
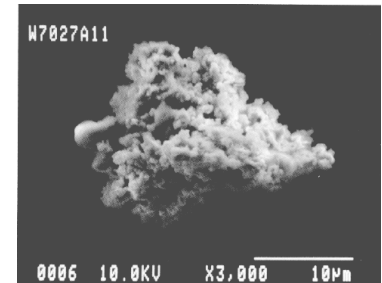
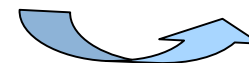
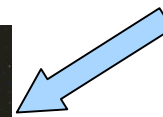


Hale-Bopp (N. Biver)

Comae and dust tails
Optically thin media



Interplanetary dust (M. Fulle)
Optically thin dust cloud



IDPs (Nasa)
Irregular, >1 µm

1. Introduction: Motivation

- Dust partly revealed to the naked eye by the **solar scattered light**
 - Limited amount of information from a few unique **in-situ missions**
 - “Ground truth” from **sample return** missions, up to now limited to dust particles collected in the coma of comet Wild 2
- ⇒ Numerous clues to the bulk properties of the dust from remote observations
- **Spectroscopy** providing information on composition
 - **Optical properties** for classification and bulk properties



McNaught (McNaught)



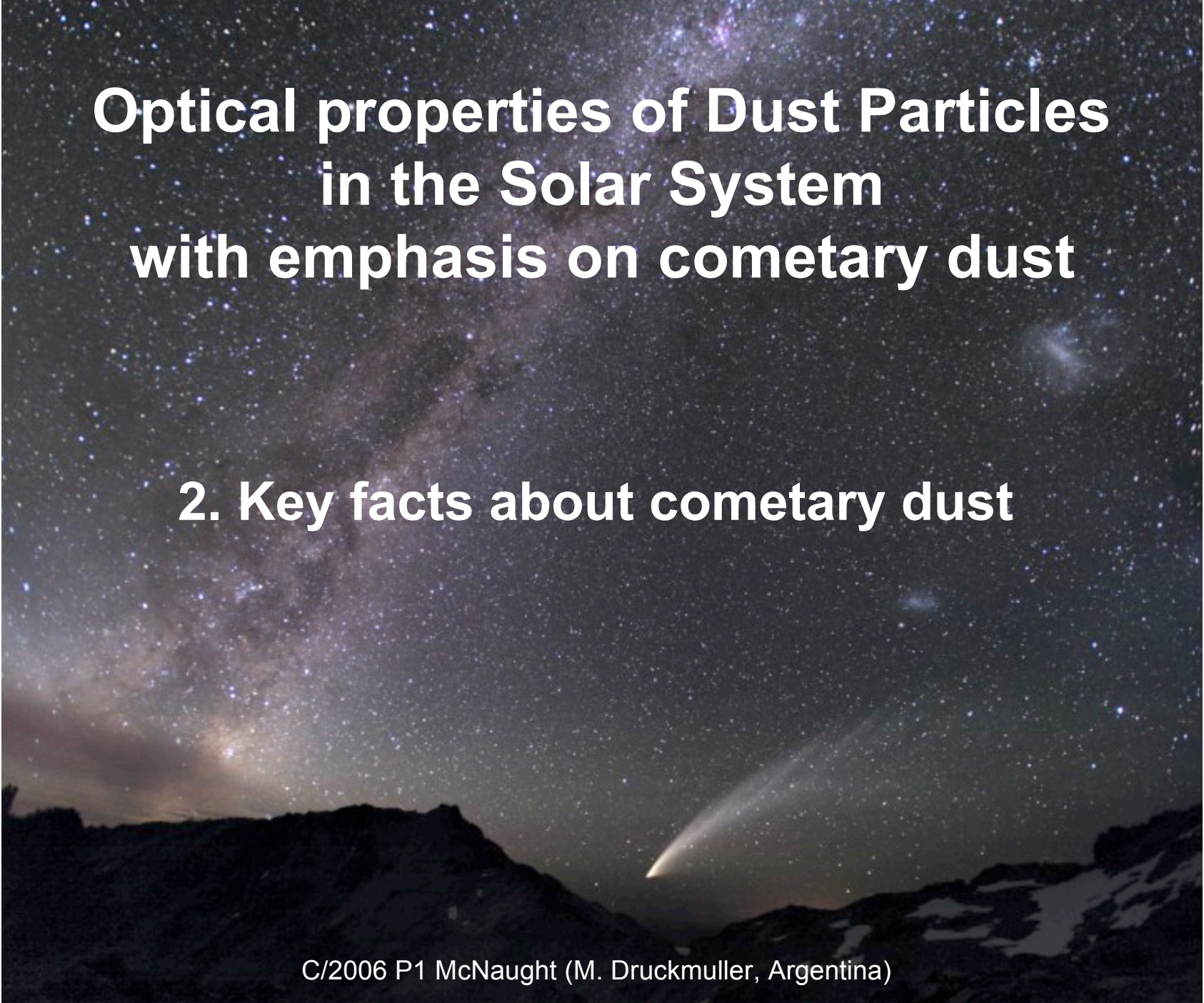
Holmes (© M. Jäger)



Halley (Giotto)



Wild 2 dust container (Stardust)



Optical properties of Dust Particles in the Solar System with emphasis on cometary dust

2. Key facts about cometary dust

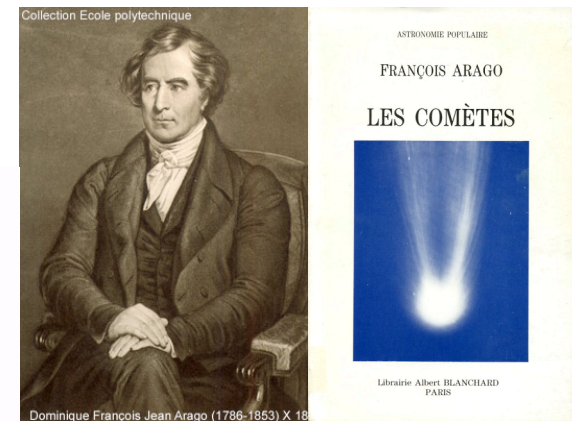
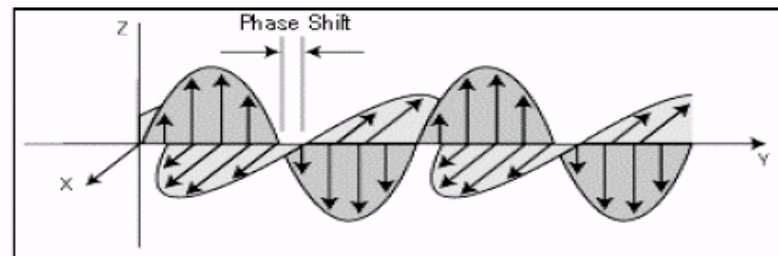
C/2006 P1 McNaught (M. Druckmuller, Argentina)

2. Key facts about cometary dust: Evidence for dust

Un-polarized solar light scattered by particles partially linearly polarized by scattering

An old “technique”, already used by:

- Arthropods (e.g. honeybees) to navigate, with their “eyes” (ommatidia) sensitive to polarisation by Rayleigh scattering on atmospheric molecules
- Arago to establish the presence of **dust in cometary tails**, through observations of a bright comet in 1819 and of comet Halley in 1835 (with a ‘polariscope’)



2. Key facts about cometary dust: Composition

1P/Halley flyby

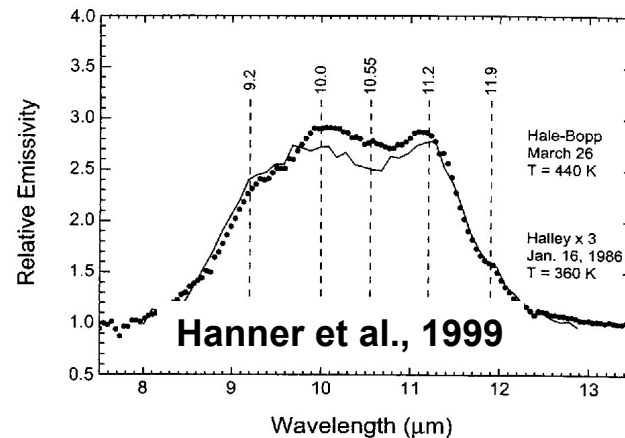
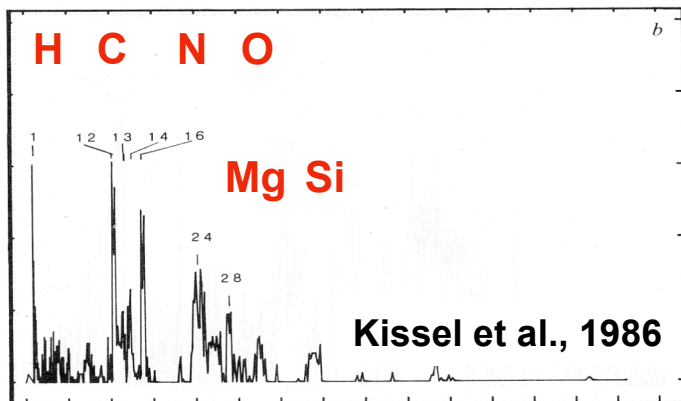
- Vega 1 and Giotto dust mass spectrometers
 - ⇒ **Dust \approx 50% rocky silicates and 50 % light elements “CHON”**
- Vega 2 spectrometer
 - ⇒ Tentative identification of PAHs
- Giotto plasma analyzers
 - ⇒ Heavy CHON ions (possibly POM)

Remote observations in the infrared domain

- ⇒ Silicate emission feature for some comets (very structured for Hale-Bopp)
- ⇒ Fits requesting amorphous and crystalline silicates (Crovisier et al., 2000)

81P/Wild 2 (Stardust flyby and samples analysis)

- ⇒ Dust also rich in CHON; heterogeneous distribution of organics; amorphous & crystalline silicates (Sandford et al., 2006; Zolensky et al., 2006, 2008)



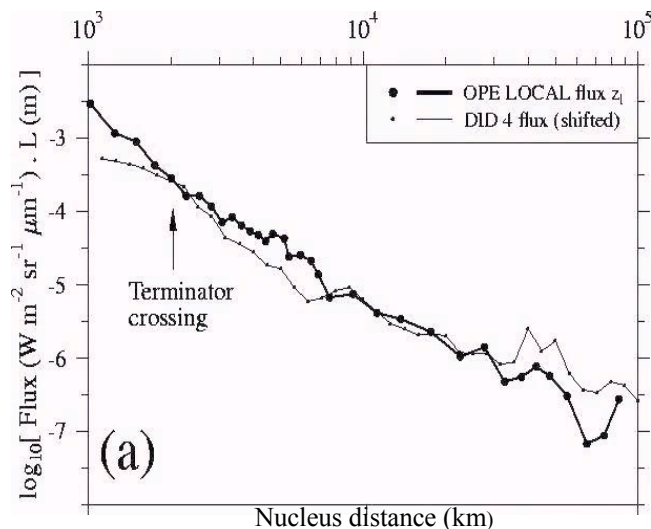
2. Key facts about cometary dust: Bulk properties

1P/Halley (Giotto)

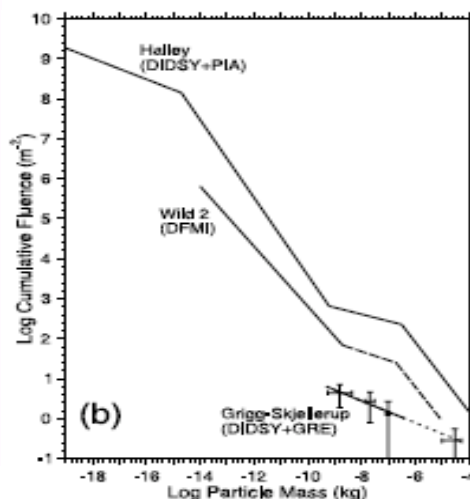
- ⇒ Dust fluence versus mass
- ⇒ Local brightness & polarization showing significant changes within coma
- ⇒ Dynamical model best fit of a dynamical model (Fulle et al., 2000)
- Albedo ≈ 0.04** , dust size distribution $\approx s^{-2.6}$, **density $\approx 100 \text{ kg m}^{-3}$**
- ⇒ **Very fluffy dust particles**

81P/Wild 2 (Stardust flyby, samples tracks and impacts)

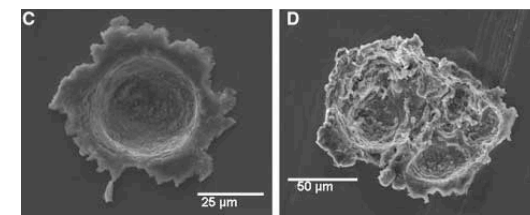
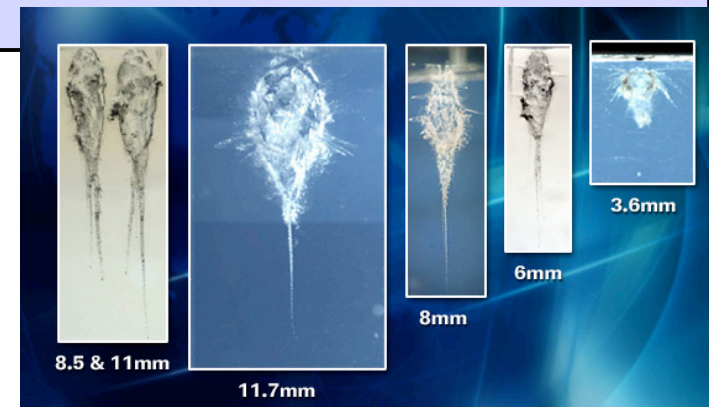
- ⇒ Fragmentation in the coma; **evidence for aggregates**
(Burchell et al., 2006, 2008; Hörz et al., 2006)



Levasseur-Regourd et al., 1999



Green et al, 2004



Hörz et al, 2006

A night sky photograph showing the Milky Way galaxy and a comet streaking across the sky. The Milky Way is visible as a dense band of stars and dust, stretching across the upper half of the frame. The comet is a bright, curved streak of light, appearing to move from the lower right towards the center. The foreground shows dark, silhouetted mountains or hills.

Optical properties of Dust Particles in the Solar System, with emphasis on cometary dust

3. Polarization of solar light scattered by dust

C/2006 P1 McNaught (M. Druckmuller, Argentina)

3. Polarization of light scattered by dust: Definitions

- For randomly oriented particles, solar light scattered by an optically thin media linearly polarized, with the electromagnetic wave predominantly oscillating perpendicular or parallel to the scattering plane.
- Linear polarisation P , **dimensionless ratio**, allowing comparisons for objects at different distances to the Sun and the observer
 - ⇒ Noticed by Lyot for lunar regions
 - ⇒ Of major importance for comets, whose intensity is not proportional to $1/R^2$, but (normalized light-curve variations) nor to $1/\Delta^2$ (development of a bright coma)
- P varying only with
 - phase angle α
 - wavelength λ
 - **properties of the scattering medium**

Intensity

$$I = I_p + I_{np}$$

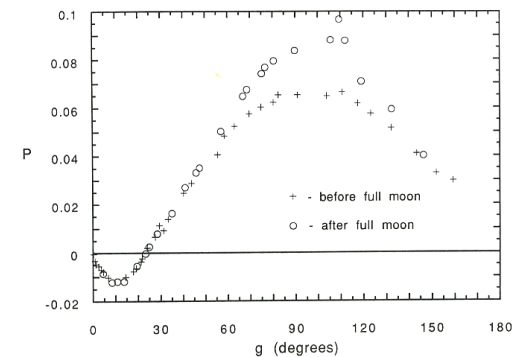
$$I = (I_{\perp} + I_{\parallel})$$

Linear polarisation

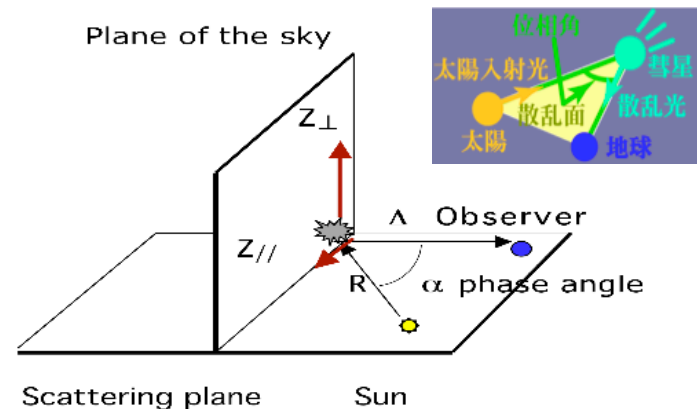
$$P = (I_{\perp} - I_{\parallel}) / (I_{\perp} + I_{\parallel})$$

$$P = -Q/I$$

$$\alpha = \pi - \theta \quad (\theta \text{ scattering angle})$$



Moon
Lyot 1929

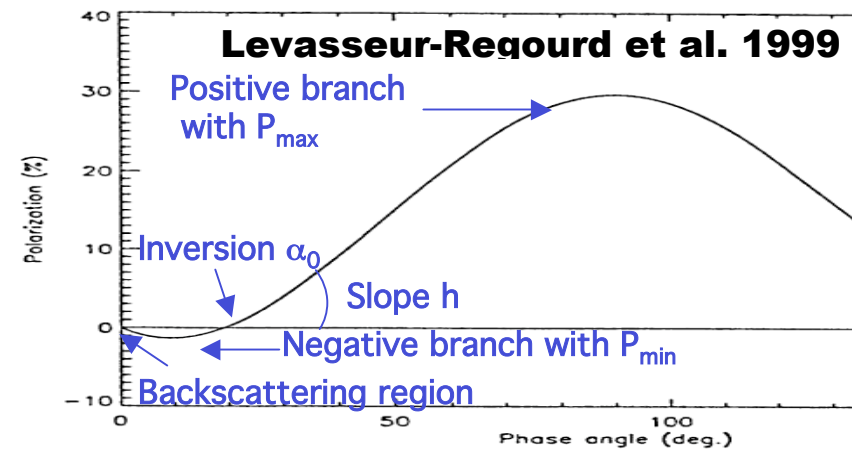


3. Polarization of light scattered by dust: Small bodies

- Phase angle α changing with time (observations' geometry), providing $P_\lambda(\alpha)$
 - ⇒ **'Smooth' polarization phase curves**, typical of scattering by irregular particles with sizes greater than observational wavelength, i.e. a few μm
 - ⇒ Mie solutions to Maxwell equations not acceptable here
- Empirical laws, e.g. albedo - slope at inversion, not necessarily acceptable (possibly only derived for one given class of objects)
- Tentative interpretation of the observed variations of $P_\lambda(\alpha)$ (e.g. α_{\min} , P_{\min} , α_0 , h , α_{\max}) and $P_\alpha(\lambda)$ in terms of physical properties, from **experimental and numerical simulations** with realistic (?) particles

Observational constraints

- Moving objects in a fixed star-field
- Narrow interference filters mandatory for comets (to avoid depolarization from gaseous emissions)
- Interplanetary data needing inversion
- Asteroids usually at small α





**Optical properties of Dust Particles
in the Solar System,
with emphasis on cometary dust**

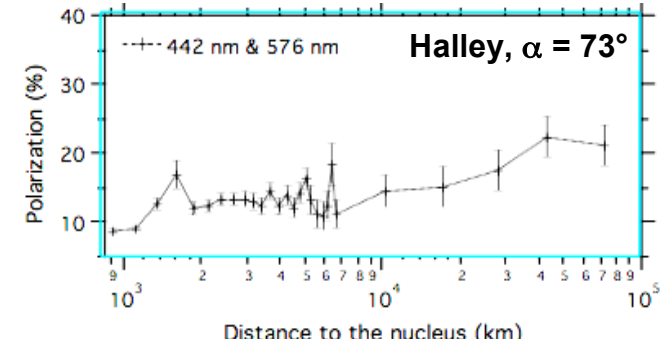
4. Cometary dust polarimetric observations

C/2006 P1 McNaught (M. Druckmuller, Argentina)

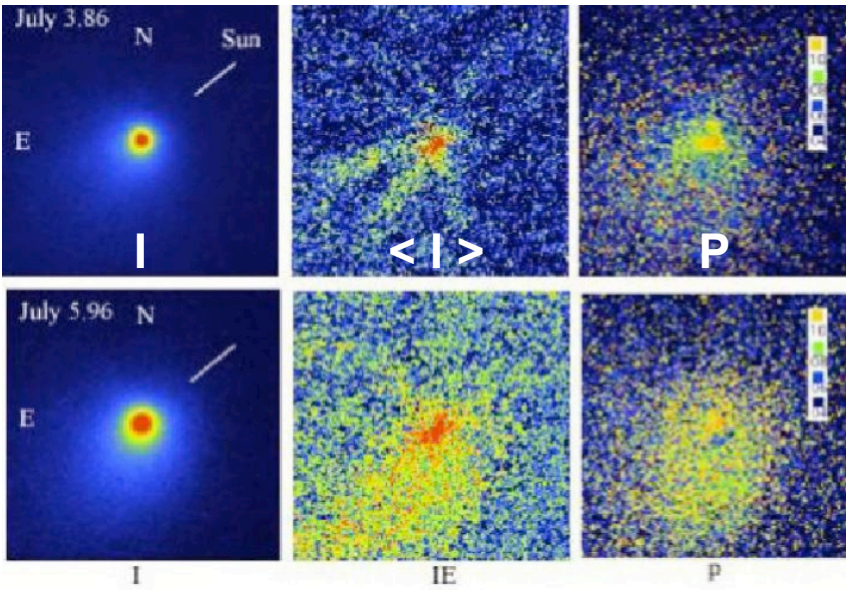


4. Cometary dust polarimetric observations: Spatial changes within the coma

- In situ measurements (OPE/Giotto)
 - ⇒ Significant variations of P in inner coma
- Remote P imaging technique (since 1990)
 - ⇒ Circumnucleus 'halo' and jet-like features (specially for active comets)
- P reaching an asymptote for increasing aperture
 - ⇒ Significance of whole coma polarisation data

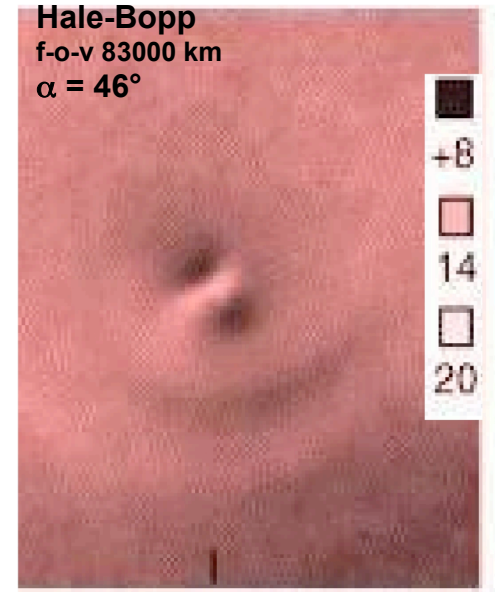


Levasseur-Regourd et al, 1999



Tempel 1
f-o-v 70000 km
 $\alpha \approx 41^\circ$

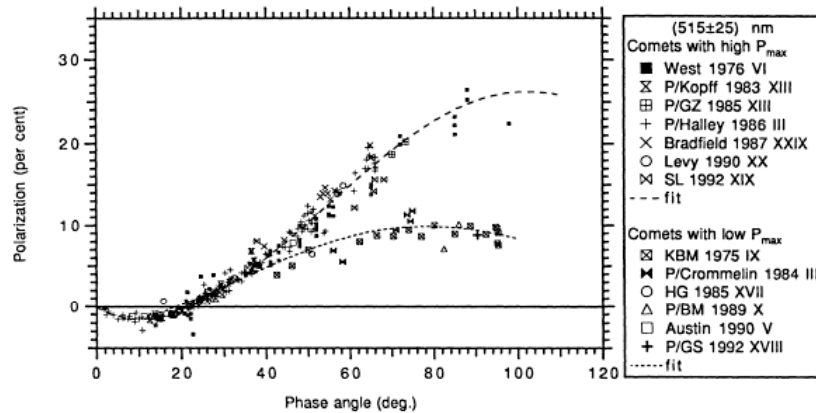
Adapted from
Hadamcik et al, 2007



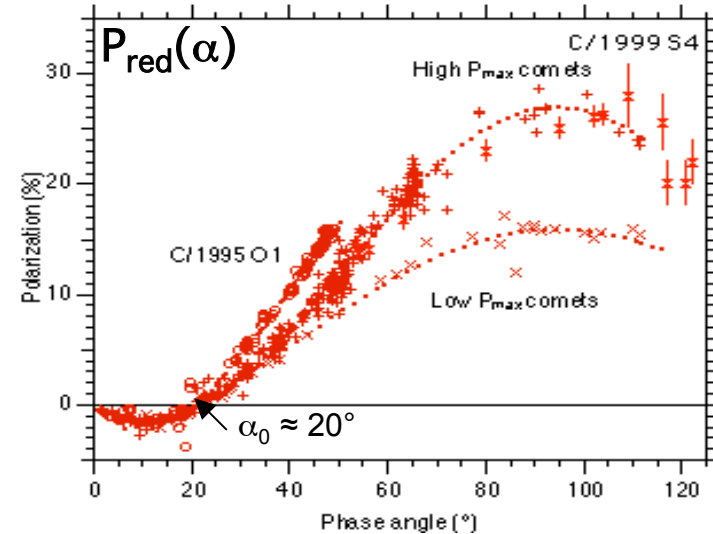
Hadamcik & L-R, 2003



4. Cometary dust polarimetric observations: α dependence (whole coma)



Levasseur-Regourd et al, 1996

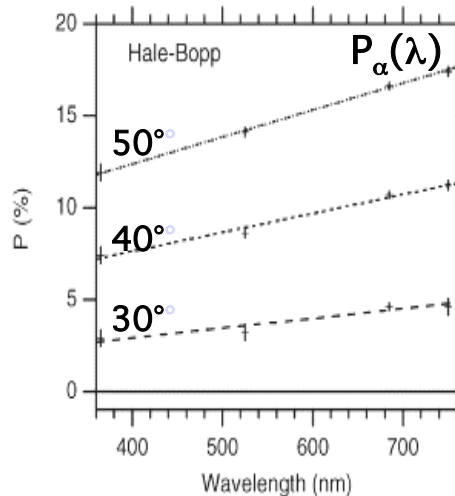


Hadamcik & Levasseur-Regourd 2003

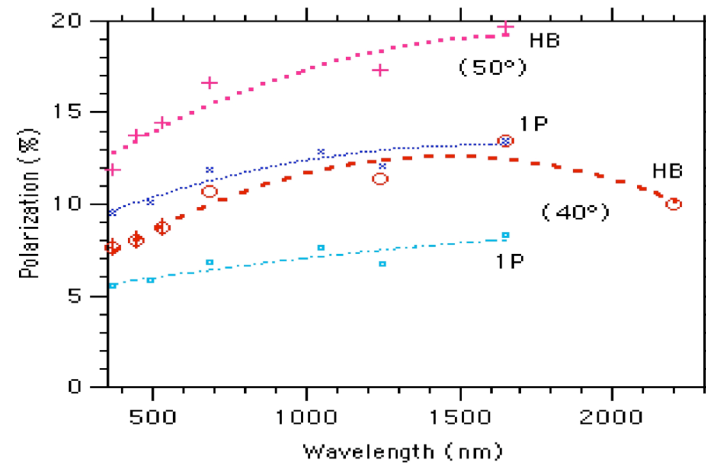
- Smooth polarisation phase curves, suggesting 2 (or 3) classes of comets from their dust properties
- P_{max} higher whenever silicate emission feature
- P possibly increasing in jet-like features or after an outburst



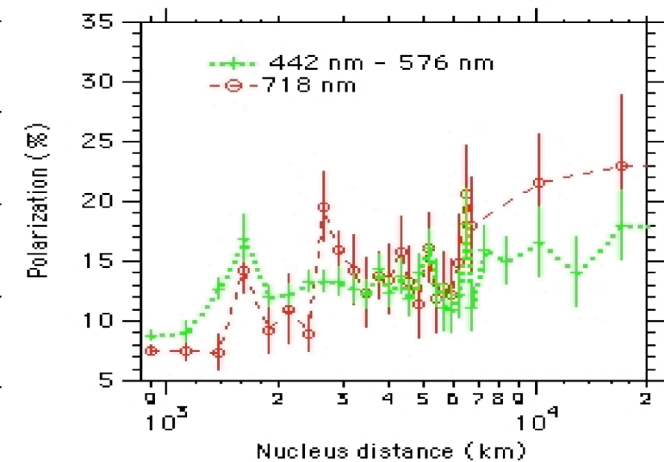
4. Cometary dust polarimetric observations: λ dependence (whole coma)



Levasseur-Regourd & Hadamcik, 2003



Hadamcik et al, 2003

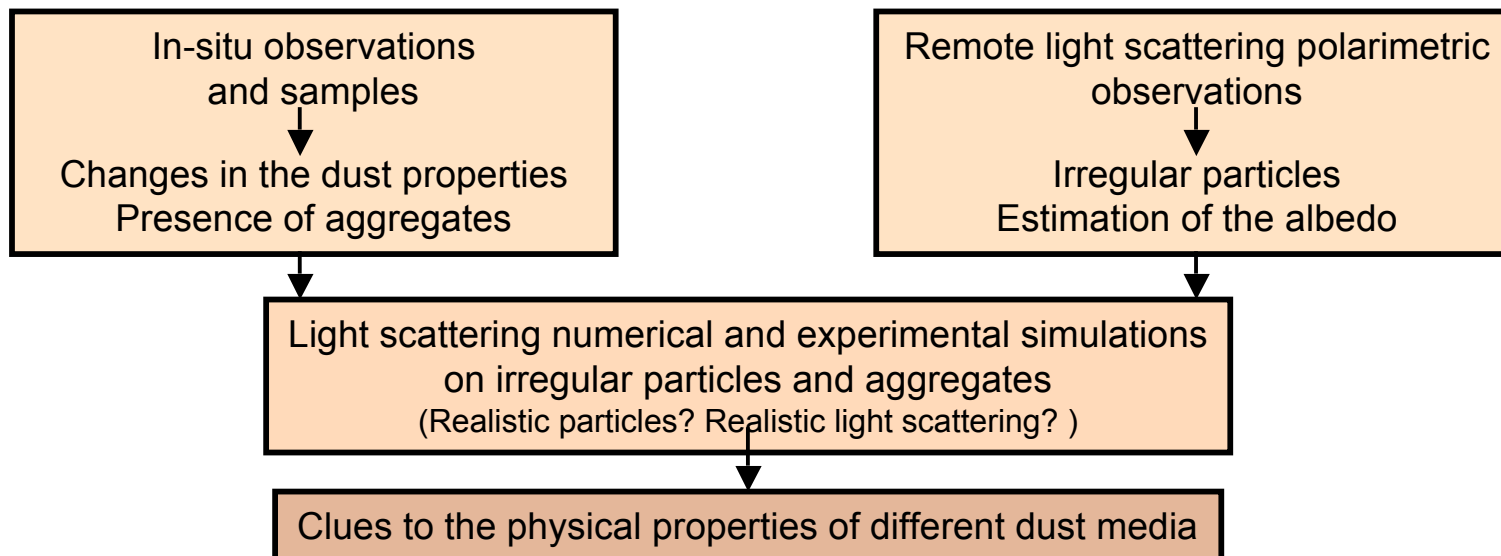


Levasseur-Regourd et al, 2005

- P usually **increasing** with λ for $\alpha > \approx 30^\circ$, at least in the visible domain
- Some exceptions
 - innermost coma (e.g. 1P/Halley)
 - disruption events, tentatively due to different dust properties inside the nucleus (e.g. C/1999 S4 LINEAR)

4. Cometary dust polarimetric observations: Need for simulations

- Significant amount of observational data for JCF comets, as well as from comets probably originating from the Oort cloud
- Existence of empirical laws (mostly deduced from asteroidal data, e.g. slope at inversion - albedo relation)
- Interpretation of the observed variations of the polarization properties in terms of physical properties, requesting both numerical and experimental simulations, with tentatively realistic dust particles

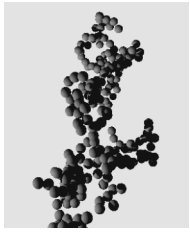




**Optical properties of Dust Particles
in the Solar System,
with emphasis on cometary dust**

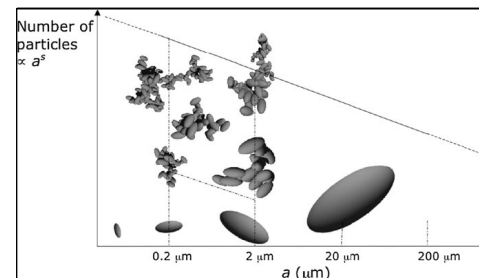
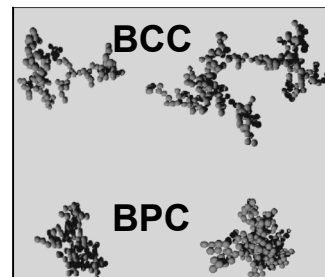
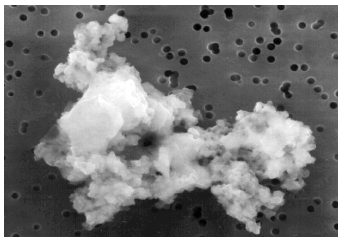
**5. Interpretation through
numerical simulations**

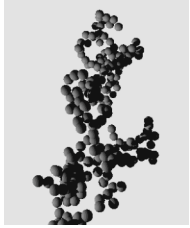
C/2006 P1 McNaught (M. Druckmuller, Argentina)



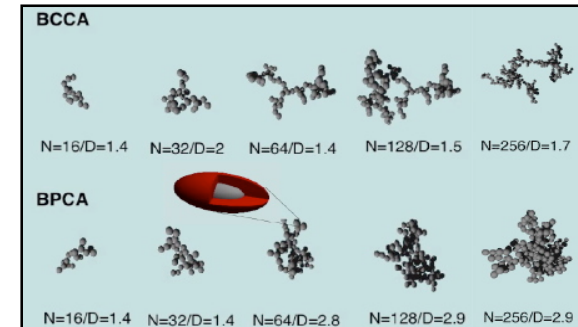
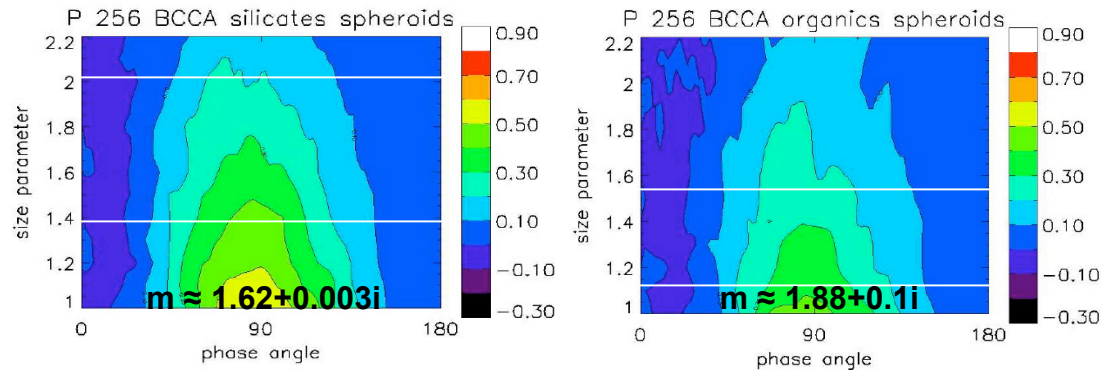
5. Interpretation through numerical simulations: principles

- **First light scattering simulations by Mukai et al (1987)**, on 1P/Halley observations, by applying Mie theory to spheres with Vega size distribution
⇒ Complex refractive index, $1.385 + 0.035 i$
Also simulations with spheroids, polyhedrons... (Lumme, 2000)
- From the late 90s, simulations with fractal aggregates of grains with **DDA codes** (Xing & Hanner, 1997; Levasseur-Regourd et al, 1997; Nakamura & Okamoto, 1999; Haubebourg et al, 1999; Petrova et al, 2000; Tiskovets et al, 2000, Kimura et al, 2003, Mann et al, 2004...) or **ray tracing** for large grains (Okada et al, 2006...)
- Example: Light scattering simulations (T-matrix, ray-tracing, DDA codes) for **spheroids of astronomical silicates and more absorbing organics** (equivalent radius a) **and fractal aggregates thereof** (BCCA & BPCA, 500 dipoles per grain, 1500 orientations, up to 256 grains)

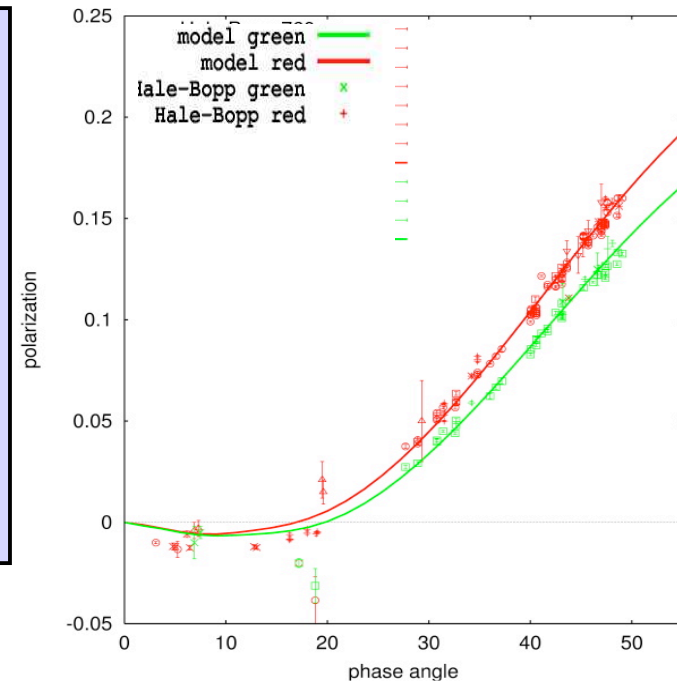




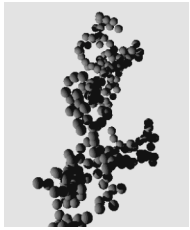
5. Interpretation through numerical simulations: Hale-Bopp in two colors



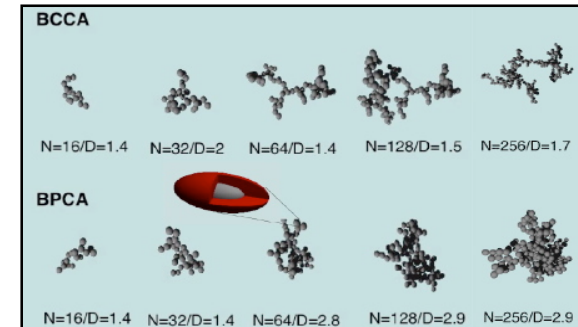
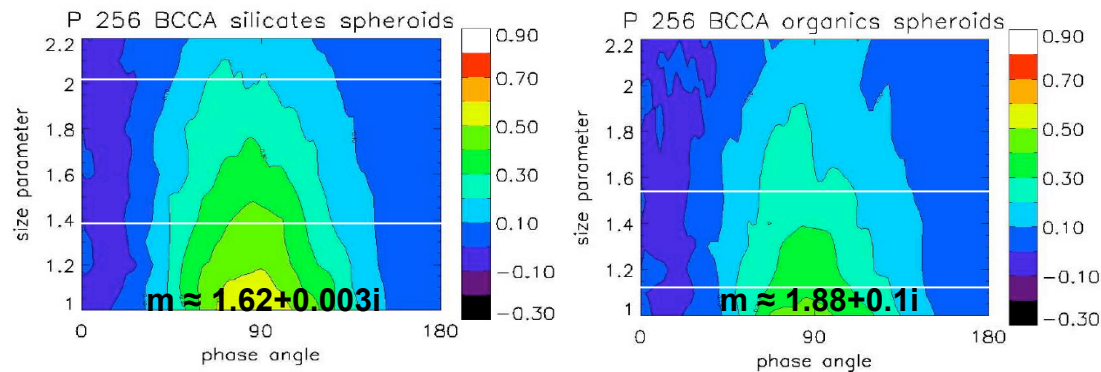
- Observations fitted for **only a few free parameters** (e.g. slope s of the size distribution a^s , minimal a , maximal a , silicates /organics ratio)
- For Hale-Bopp, from fits in two colors
 Size distribution $\approx a^{-3}$
 $0.1 \mu\text{m} < a < 20 \mu\text{m}$
 In mass \approx **40% silicates & 60% organics**
 (up to 65% silicates, down to 35% organics)



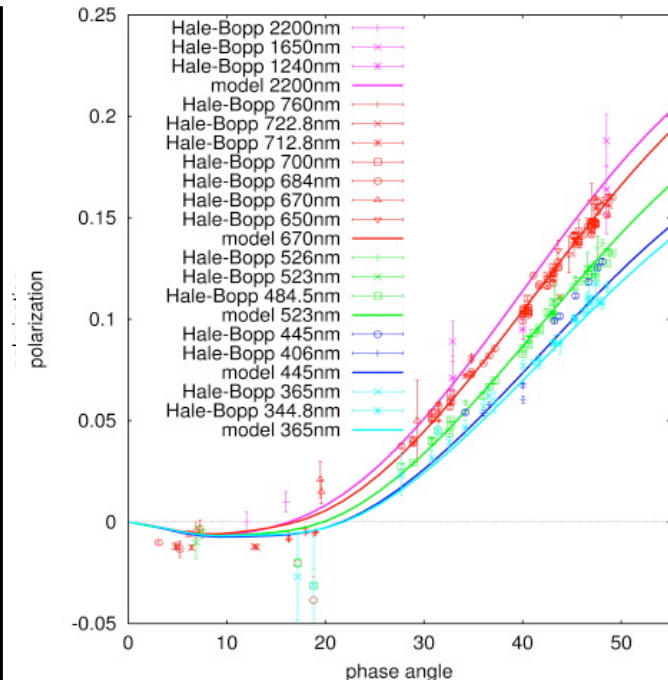
Lasue et al. 2009



5. Interpretation through numerical simulations: 'predictions' for other colors



- Observations fitted for **only a few free parameters** (e.g. slope s of the size distribution a^s , minimal a , maximal a , silicates /organics ratio)
- For Hale-Bopp, from fits in two colors
 Size distribution $\approx a^{-3}$
 $0.1 \mu\text{m} < a < 20 \mu\text{m}$
 In mass \approx **40% silicates & 60% organics**
 (up to 65% silicates, down to 35% organics)
- With identical parameters, also excellent agreement in UV and near IR



Lasue et al. 2009



**Optical properties of Dust Particles
in the Solar System,
with emphasis on cometary dust**

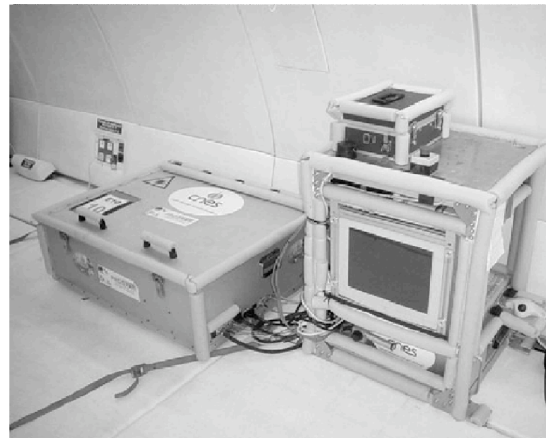
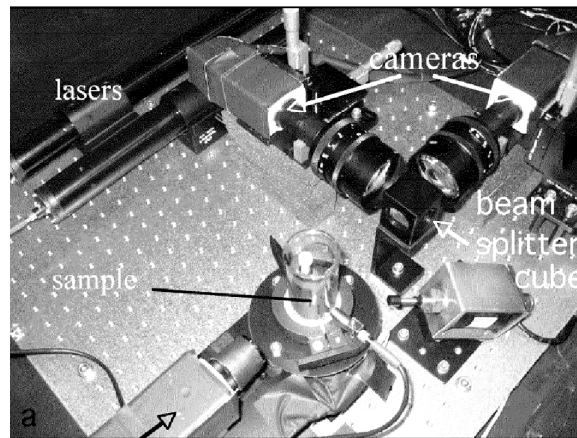
**6. Interpretation through
laboratory simulations**

C/2006 P1 McNaught (M. Druckmuller, Argentina)

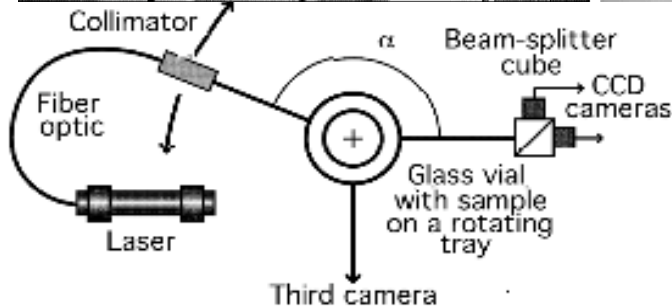


5. Interpretation through experimental simulations: principle

- Measurements with **PROGRA²-vis** experiment (at 543.5 & 632.8 nm) in the laboratory and during **parabolic flights campaigns**, avoiding sedimentation and multiple scattering on gravity packed layers (Worms et al, 1999, Renard et al. 2002)
- Calibration with spheres through Mie computations



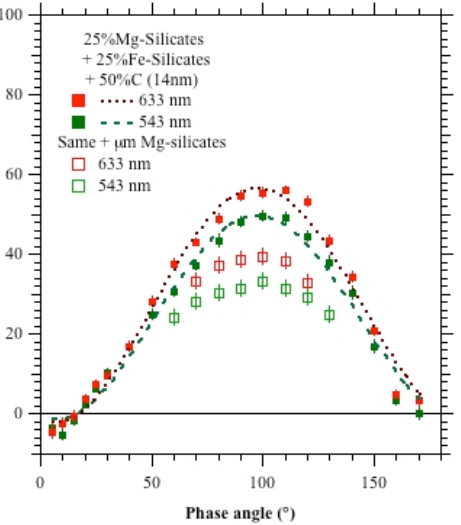
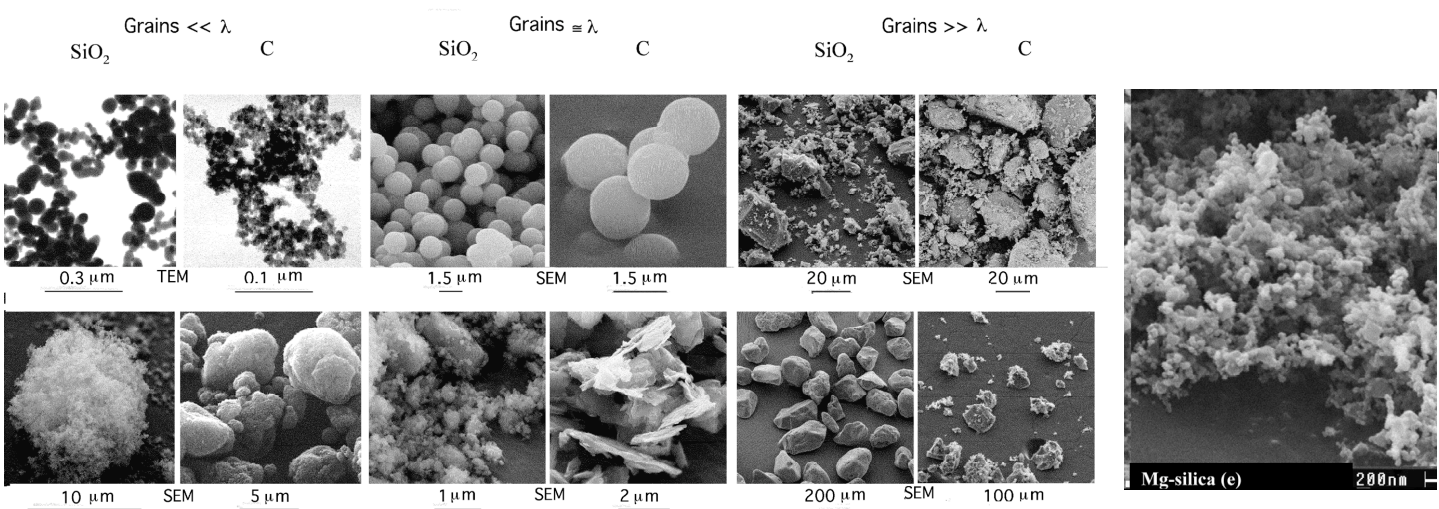
Hadamcik et al, 2008





5. Interpretation through experimental simulations: main results

- Good match for mixtures of **fluffy** Mg-silicates, Fe-silicates and C aggregates, with some **compact** Mg-silicates grains (fluffy chains = negative branch, C compounds = polarization colour)
- Excellent match with new sets of NASA samples, e.g. porous aggregates of sub μm (MgSiO + FeSiO + C) grains, and compact Mg-silicates



Hadamcik et al., 2007 and 2008



**Optical properties of Dust Particles
in the Solar System,
with emphasis on cometary dust**

**7. Optical properties
Interplanetary and asteroidal dust**

C/2006 P1 McNaught (M. Druckmuller, Argentina)

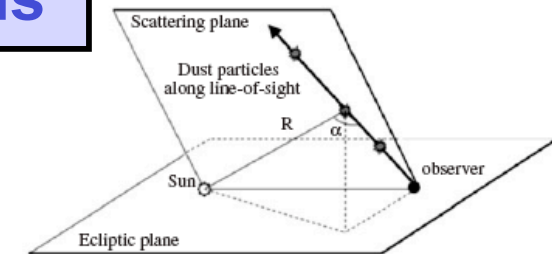


7. Optical properties: Zodiacal light observations

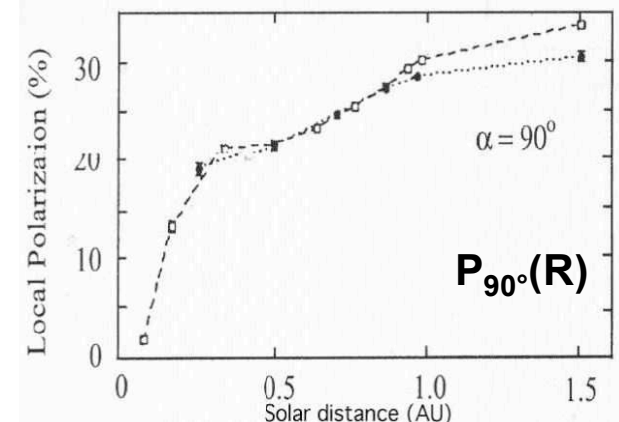
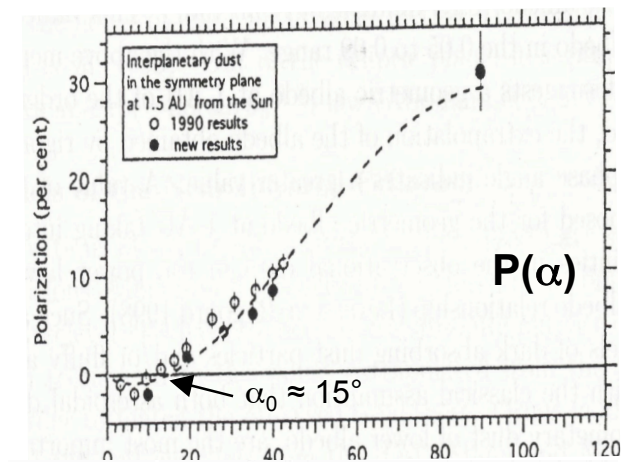
- Interplanetary data needing an inversion

$$I_{\lambda}(\varepsilon, R) = F(\lambda) \int [n(r) \sigma_{\lambda}(r, \theta) / r^2] dl$$

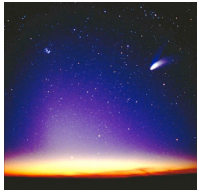
- Local polarisation P retrieved
 - rigorously for l-o-s tangent to the direction of motion of the observer and for the section of the l-o-s where he is located (Dumont, 1973)
 - through inversion techniques, in the near-ecliptic symmetry plane of the cloud (Dumont and Levasseur-Regourd, 1985; Levasseur-Regourd et al., 1991; Lumme, 2000)
- From thermal emission, local temperature $T(R) \approx T_0 R^{-0.45}$, i.e. non blackbody (Lasue et al, 2007)
- **Smooth $P(\alpha)$ phase curve**
(at $R = 1.5$ AU near the ecliptic plane)
- **Decrease of $P(90^\circ)$**
with decreasing solar distance R



Levasseur-Regourd et al, 2007

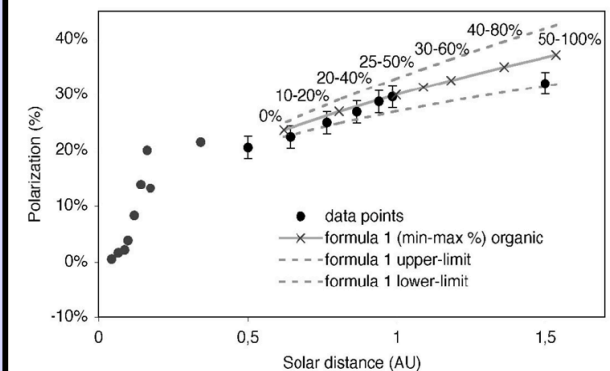
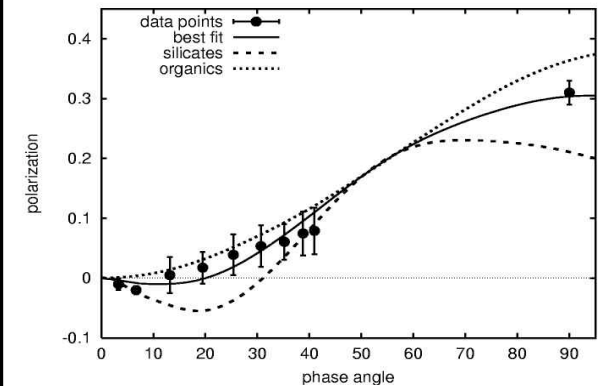


Levasseur-Regourd et al, 1991

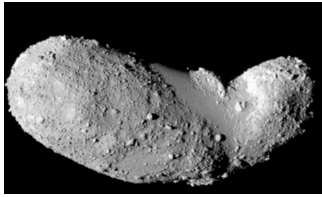


7. Optical properties: Interplanetary dust simulations

- Phase curve fits requesting both transparent and **absorbing** materials, with some **aggregates**
- At $R = 1.5$ AU near the ecliptic plane
 size distribution a^{-3} , $0.11 < a < \approx 10 \mu\text{m}$
 $a^{-4.4}$, $a > \approx 10 \mu\text{m}$
 in mass, 40-80% silicates, 60-20% organics
- Un-fragmented aggregates likely to be of **cometary origin**: at least 20% in mass at 1.5 AU
- $P(R)$ decrease with decreasing R possibly due to a progressive thermal degradation of organics (HCN polymers and other solid carbonaceous compounds)
- Drastic change below ≈ 0.3 UA possibly due to degradation of silicates with smaller particles

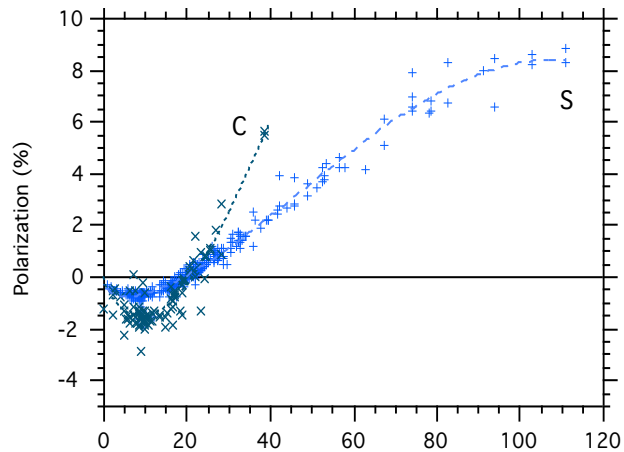


Lasue et al., 2007

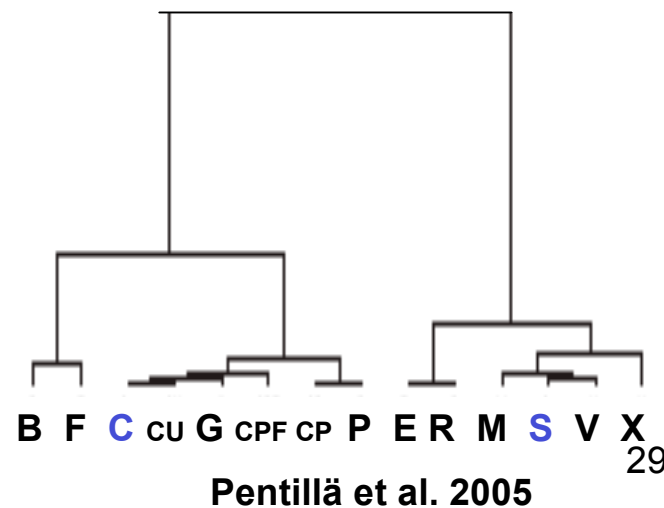


7. Optical properties: Observations of asteroids (α)

- Observations mostly documented for S and C types and at small phase angles (mostly negative branch), except for NEA
- Slope at inversion h increasing with decreasing albedo
- Trend of the positive branch providing information about **taxonomic type** (principal component analysis)
- Example of application: 2667 **Steins**, first Rosetta target in Sept. 2008
 \Rightarrow Albedo ≈ 0.45 and E-type (Fornasier et al. 2006)



Levasseur-Regourd & Hadamcik 2003

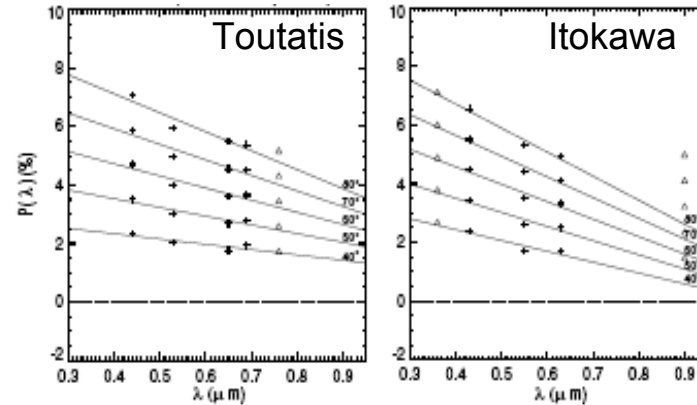


Penttillä et al. 2005

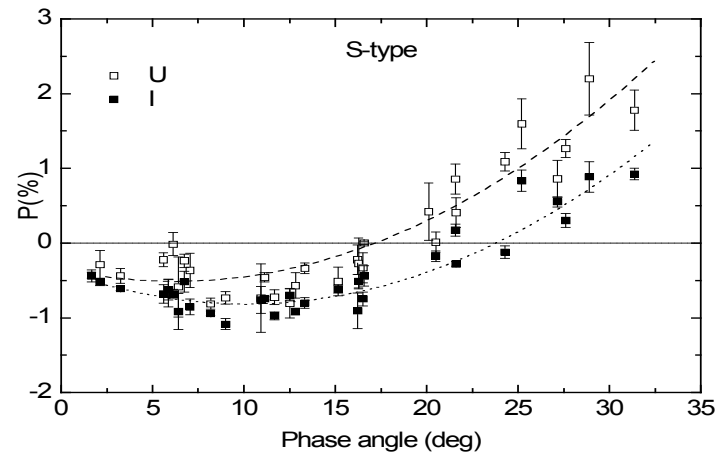


7. Optical properties: Observations of asteroids (λ)

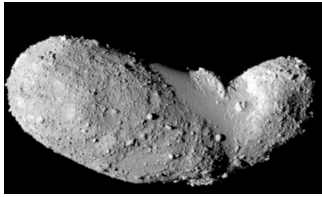
- Well documented for 4179 Toutatis (Lupishko et al. 1995, Mukai et al. 1997, Ishiguro et al. 1997) & 25143 Itokawa (Cellino et al. 2005)
- Polarisation significantly **decreasing** with **increasing** λ for S-type
- However, from ongoing polarimetric observations (e.g. from OHP observatory), polarisation likely to increase with increasing λ for C-type



Levasseur-Regourd et al. 2003



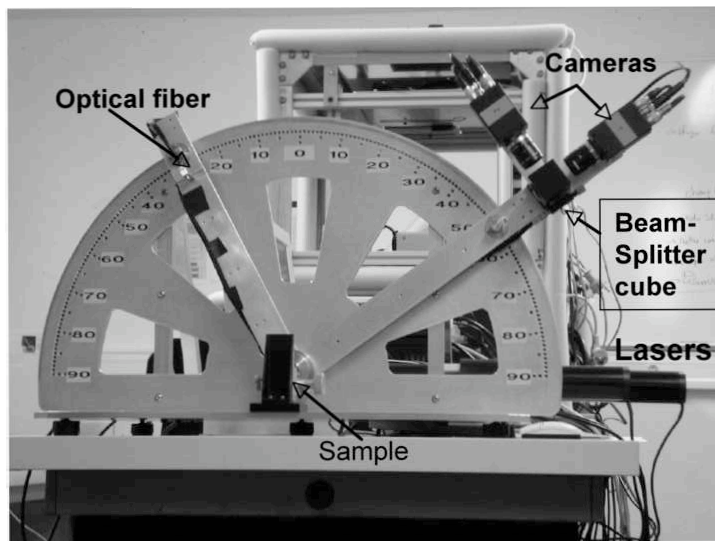
Belskaya et al. 2008



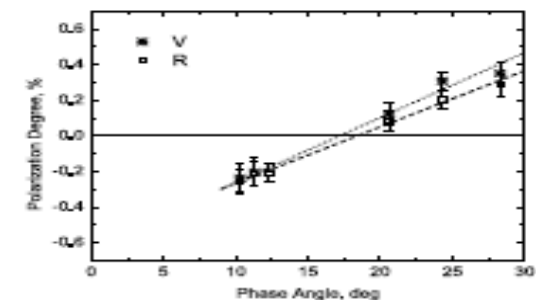
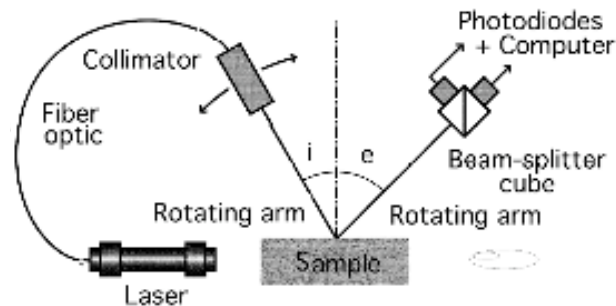
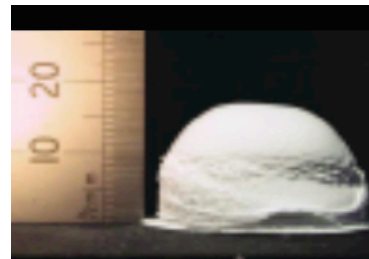
7. Optical properties: Asteroidal regoliths simulations



- Numerical simulations on irregular regolith layers not (yet?) feasible
- Measurements with **PROGRA²-surf** on dust layers (Hadamcik et al. 2008)
- Tests with huge agglomerates (filling factors of about 0.15) prepared by Braunschweig University
- Tentative confirmation of the faint polarization color trend observed for Steins on aubrites samples (expected to originate from E-type objects)



Hadamcik et al, 2008



Fornasier et al, 2006



A night sky photograph showing the Milky Way galaxy and a comet streaking across the sky. The Milky Way is visible as a dense band of stars and dust, stretching across the upper half of the frame. The comet is a bright, curved streak of light, appearing to move from the lower right towards the center. The foreground shows dark, silhouetted mountains or hills.

Optical properties of Dust Particles in the Solar System, with emphasis on cometary dust

8. Conclusions and perspectives

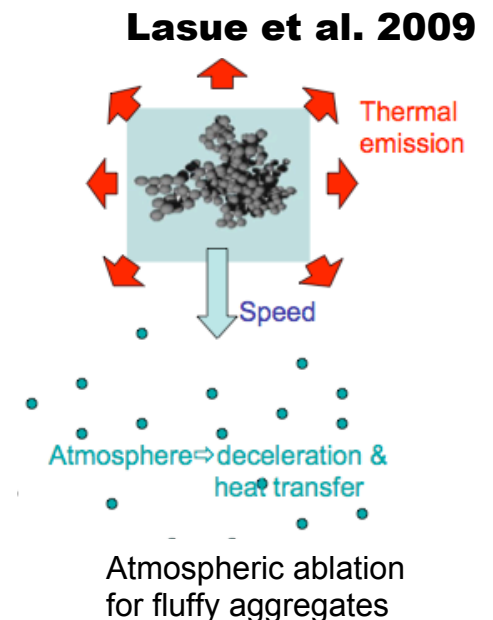
C/2006 P1 McNaught (M. Druckmuller, Argentina)

8. Conclusions

- Space missions, and specially sample return missions, present unique opportunities to reveal the dust properties of a few solar system bodies
- The analysis of (remote) observations of the linear polarization of the solar light they scatter gives clues to the properties of these various media
- Heterogeneities in terms of dust properties are found between
 - innermost comae and comae
 - different comets (high and low P_{\max} comets)
 - dust in the coma and “fresh” dust from the subsurface
- Comparisons between the shapes of the polarimetric phase curves provide a classification with respect to the dust properties
- Extensive programmes of numerical and laboratory simulations with various irregular compact grains and aggregates are being developed by various teams...

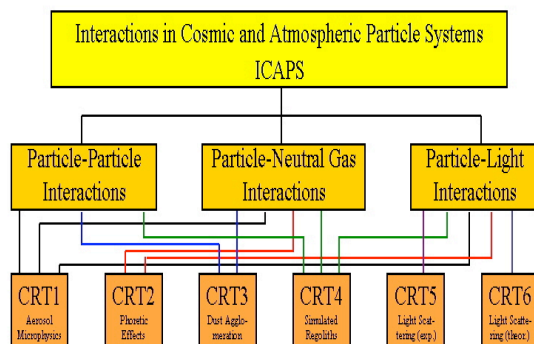
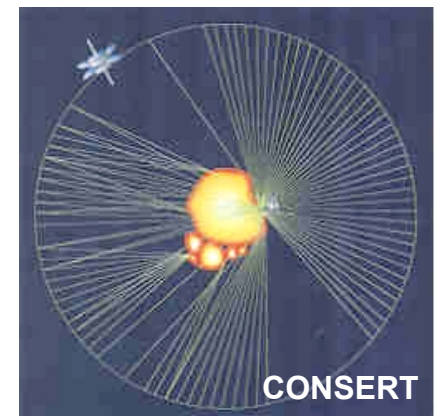
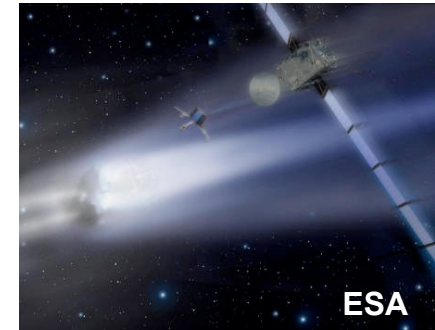
8. Conclusions

- The programmes of numerical and laboratory simulations with various irregular compact grains and aggregates have already established that
 - cometary dust particles are built of both very fluffy aggregates and more compact grains, with a significant proportions of both rather transparent silicates and absorbing materials
 - a significant proportion of interplanetary dust is rich in absorbing organics (evaporating close to the Sun), of cometary origin
- Such properties might suggest
 - significantly **high micro-porosity of low-density nuclei** (Levasseur-Regourd et al., 2008)
 - possible **survival of cometary organics** embedded in fluffy aggregates in terrestrial planets atmospheres, **by LHB time**

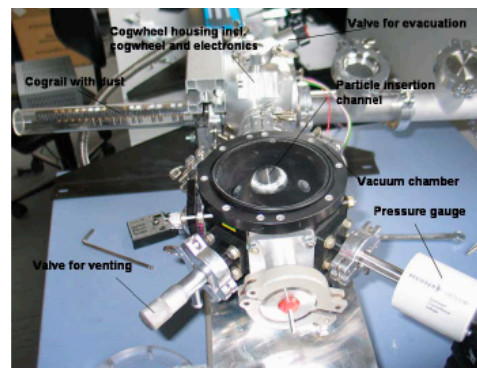


8. Perspectives...

- More on-going remote observations of comets
- More zodiacal light remote observations with Akari
Also in-situ observations, parallel to Planet C trajectory
- In 2014-2015, **Rosetta** rendezvous with and landing on 67P/Churyumov-Gerasimenko
dust in the coma (MIDAS, GIADA, OSIRIS...) nucleus structure (CONSERT)
- More experimental simulations to take place in the lab
Also possibly on board the ISS with **ICAPS** precursor?
- Marco-Polo mission to a primitive body (ESA-JAXA) ?



ICAPS



8. Perspectives

Some important aims for future studies

- **Numerical simulation of light scattering through irregular dust particles layers (i.e. multiple scattering)**
- **Laboratory simulations on realistic ices and dust mixture, possibly in low gravity conditions**
- **Better links with interstellar dust and dust debris studies**

⇒ Useful information on formation and physical processes, e.g.
accretion and agglomeration,
dust ejection and fragmentation,
sublimation of organics, collisions,
gravitational and non-gravitational effects

Acknowledgements

R. Dumont, E. Desvoivres, B. Goidet-Devel, E. Hadamcik,
V. Haudebourg, W. Kofman, P. Lamy, J. Lasue, J.B. Renard, J.C. Worms...

I. Belskaya, J. Blum, A. Cellino, M. Fulle, S. Green, M.S. Hanner,
L. Kolokolova, I. Mann, N. McBride, J.A.M. McDonnell, K. Muinonen,
J. Nuth, A. Pentillä, W.T. Reach, F. Rietmeijer, Y.G. Shkuratov, M. Zolensky...

H. Kimura, T. Mukai, Y. Okada, and all my Japanese colleagues

References on recent papers to which we have contributed on these topics

- A.C. Levasseur-Regourd, T. Mukai, J. Lasue, Y. Okada, Physical properties of cometary and interplanetary dust, *Planet. Space Sci.* 55, 1010-1020, 2007
- E. Hadamcik, A.C. Levasseur-Regourd, V. Leroi, D. Bardin, Imaging polarimetry of the dust coma of comet Tempel 1 before and after Deep Impact, *Icarus*, 190, 459-468.
- J. Lasue, A.C. Levasseur-Regourd, N. Fray, H. Cottin, Inferring the interplanetary dust properties from remote observations and simulations, *Astron. Astrophys.*, 473, 641-649, 2007
- E. Hadamcik, J.B. Renard, F.J.M. Rietmeijer, A.C. Levasseur-Regourd, H.G.M. Hill, J.M. Karner, J.A. Nuth, Light scattering by fluffy Mg-Fe-SiO and C mixtures as cometary analogs (PROGRA² experiment), *Icarus*, 190, 660-671, 2007
- A.C. Levasseur-Regourd, M. Zolensky J. Lasue, Dust in cometary comae: present understanding of the structure and composition of dust particles, *Planet. Space Sci.*, 56 1719-1724, 2008
- I.N. Belskaya, A.C. Levasseur-Regourd, A. Cellino, Y.E. Efimov, N.M. Shakhovskoy, E., Hadamcik, P. Bendjoya, Polarimetry of main belt asteroids: wavelength dependence, *Icarus*, 199, 97-105, 2009
- J. Lasue, A.C. Levasseur-Regourd, E. Hadamcik, G. Alcouffe, Cometary dust properties retrieved from polarization observations, Application to C/1995 O1 Hale-Bopp and 1P/Halley, *Icarus*, 199, 129-144, 2009
- E. Hadamcik, A.C. Levasseur-Regourd, Optical properties of dust from Jupiter Family Comets, *Planet. Space Sci.*, in press
- A.C. Levasseur-Regourd, E. Hadamcik, E. Desvoivres, J. Lasue, Probing the internal structure of the nuclei of comets, *Planet. Space Sci.*, in press
- E. Hadamcik, J.B. Renard, A.C. Levasseur-Regourd, J.C. Worms, Laboratory measurements of the light scattered by clouds of solid particles by an imaging technique, *Light scattering review 4*, Bremen University, in press

Also *Space Sci. Rev.*, 128, 2007 papers on Rosetta, dust, and structure of the nucleus

Thank you for your attention

References

1. Belskaya, Irina N., Levasseur-Regourd, A. C., Cellino, A., et al., 2009, *Icarus*, 199, 1, 97-105.
2. Fornasier, S., Belskaya, I., Fulchignoni, M., et al., 2006, *A&A*, 449, 2, L9-L12.
3. Green, S. F., McDonnell, J. A. M., McBride, N., et al., 2004, *Journal of Geophysical Research*, 109, E12.
4. Hadamcik, E., Levasseur-Regourd, A. C., 2003, *A&A*, 403, 757-768.
5. Hadamcik, E., Levasseur-Regourd, A. C., Leroi, V., Bardin, D., 2007, *Icarus*, 190, 2, 459-468.
6. Hadamcik, E., Renard, J.-B., Lasue, J., Levasseur-Regourd, A.C., Blum, J., Schraepler, R., 2007, *J. Quant. Spectros. Radiat. Transfer*, 106, 74-89.
7. Hadamcik, E., Renard, J.-B., Levasseur-Regourd, A.C., Worms, J.C., *Light scattering review 4*, Bremen University, in press.
8. Hadamcik, E., Renard, J.-B., Rietmeijer, F. J. M., Levasseur-Regourd, A. C., Hill, H. G. M., Karner, J. M., Nuth, J. A., 2007, *Icarus*, 190, 2, 660-671.
9. Hanner, Martha S., 1999, *Space Science Reviews*, 90, 1/2, 99-108.

References

10. Horz, F., Bastien, R., Borg, J., et al., 2006, *Science*, 314, 5806, 1716-1719.
11. Kissel, J., Sagdeev, R. Z., Bertaux, J. L., et al., 1986, *Nature*, 321, 280-282.
12. Lasue, J., Levasseur-Regourd, A. C., Fray, N., Cottin, H., 2007, *A&A*, 473, 2, 641-649.
13. Lasue, J., Levasseur-Regourd, A. C., Hadamcik, E., Alcouffe, G., 2009, *Icarus*, 199, 1, 129-144
14. Levasseur-Regourd, A. C., Cabane, M., Chassefiere, E., et al., 1999, *Advances in Space Research*, 23, 7, 1271-1277.
15. Levasseur-Regourd, A. C., Hadamcik, E., Lasue, J., 2006, *Advances in Space Research*, 37, 1, 161-168.
16. Levasseur-Regourd, A. C., Hadamcik, E., Lasue, J., 2005, *Highlights of astronomy* 13, 498-500.
17. Levasseur-Regourd, A. C., Hadamcik, E., Renard, J. B., 1996, *A&A*, 313, 327-333.
18. Levasseur-Regourd, A. C., McBride, N., Hadamcik, E., Fulle, M., 1999, *A&A*, 348, 636-641.
19. Levasseur-Regourd, A. C., Mukai, T., Lasue, J., Okada, Y., 2007, *Planetary and Space Science*, 55, 9, 1010-1020.

References

20. Levasseur-Regourd, A. C., Renard, J. B., Dumont, R., 1991, *Advances in Space Research*, 11, 12, 175-182.
21. Levasseur-Regourd, A. C., Hadamcik, E., 2003, *J. Quant. Spectros. Radiat. Transfer*, 79, 903-910.
22. Lyot, B., 1929, *Ann. Obs. Paris VIII*, 1.
23. Penttila, A., Lumme, K., Hadamcik, E., Levasseur-Regourd, A. C., 2005, *A&A*, 432, 3, 1081-1090.